

FOR LEASE

STREET RETAIL - 1590 MADISON AVE, NY, NY

1590 MADISON



John R. Gendron, CCIM
207-939-8500 or 212-840-9000
johnrgendron@gmail.com

GENDRON
COMMERCIAL BOSTON

www.gendroncommercial.com
johnrgendron@gmail.com
207-939-8500 | 212-840-9000

TABLE OF CONTENTS

EXCLUSIVELY LISTED BY:

John R. Gendron, CCIM
207-939-8500 | 212-840-9000
johnrgendron@gmail.com



3 PROPERTY OVERVIEW

5 FLOOR PLAN

13 PHOTOS

15 DEMOGRAPHICS

PROPERTY OVERVIEW



PROPERTY DATA

Address:	1590 Madison Ave, NY, NY
Lease Type:	Modified Gross
# of Units Available:	3
Price PSF	\$65.00
Available - Unit #1:	1,060 +/- SF – Community Facility/Medical Use
Available - Unit #2:	5,100 +/- SF – Community Facility/Medical Use
Available – Unit #3:	1,440 +/- SF - Retail/Office/Medical Use
Parking:	Public parking garage available on 107 th side next to Labcorp. Parking available for patients and reserved parking for some employees!
Come Join the following:	Dunkin Donuts, Labcorp, and Associated Grocery!
Lease Term:	10 Year Minimum

FLOOR PLANS



FLOOR PLAN – GROUND FLOOR

Lakeview - 1250 5th Avenue / 1590 Madison Avenue

EXISTING GROUND FLOOR PROGRAM

5

Leased to Labcorp

1

AVAILABLE – Community Facility/Medical

- 1 = 1,060 SF
- 2 = 5,100 SF
- 3 = 1,440 SF
- 4 = LEASED
- 5 = LEASED
- 6 = LEASED

2

AVAILABLE – Community Facility/Medical

3

AVAILABLE – Retail/Office/Medical

4

Leased to Dunkin Donuts

Leased to Dentist

6

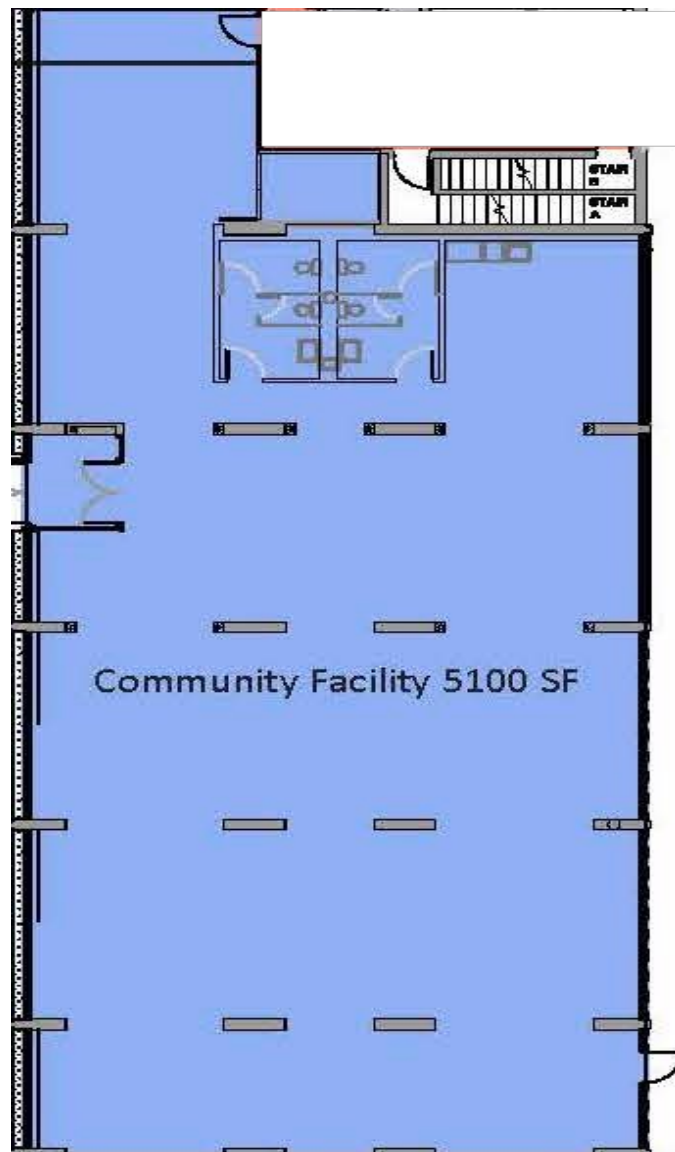
LEASED – GROCERY



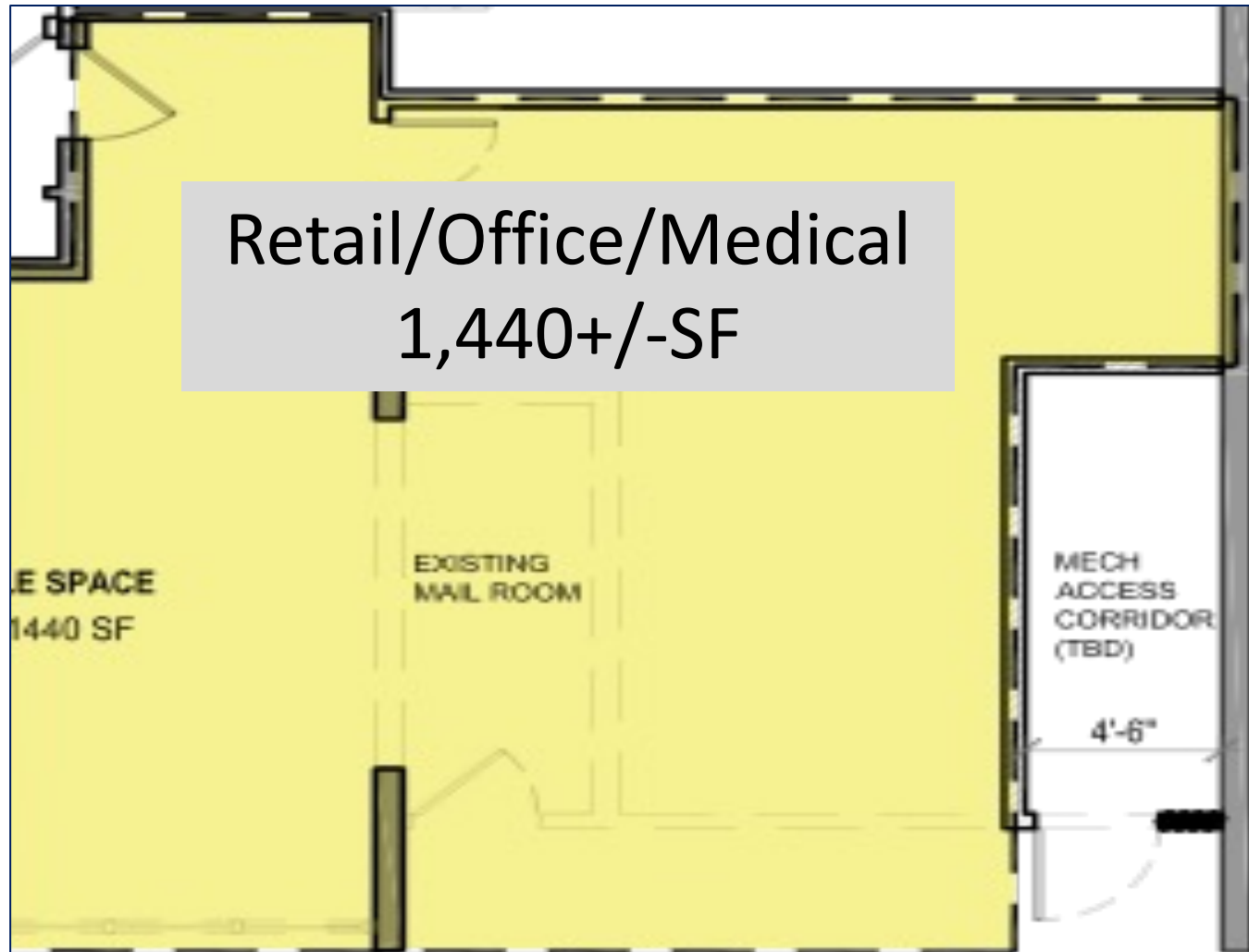
±4800 SF	Management Office ±370 SF	Medical	Laundry ±1600 SF	Community Rm ±3600 SF	Security Office 350 SF	Mail Rooms ±450 SF	Trash & MERs ±3700 SF	Retail Space ±9500 SF	Parking ±14,100 SF
----------	---------------------------	---------	------------------	-----------------------	------------------------	--------------------	-----------------------	-----------------------	--------------------

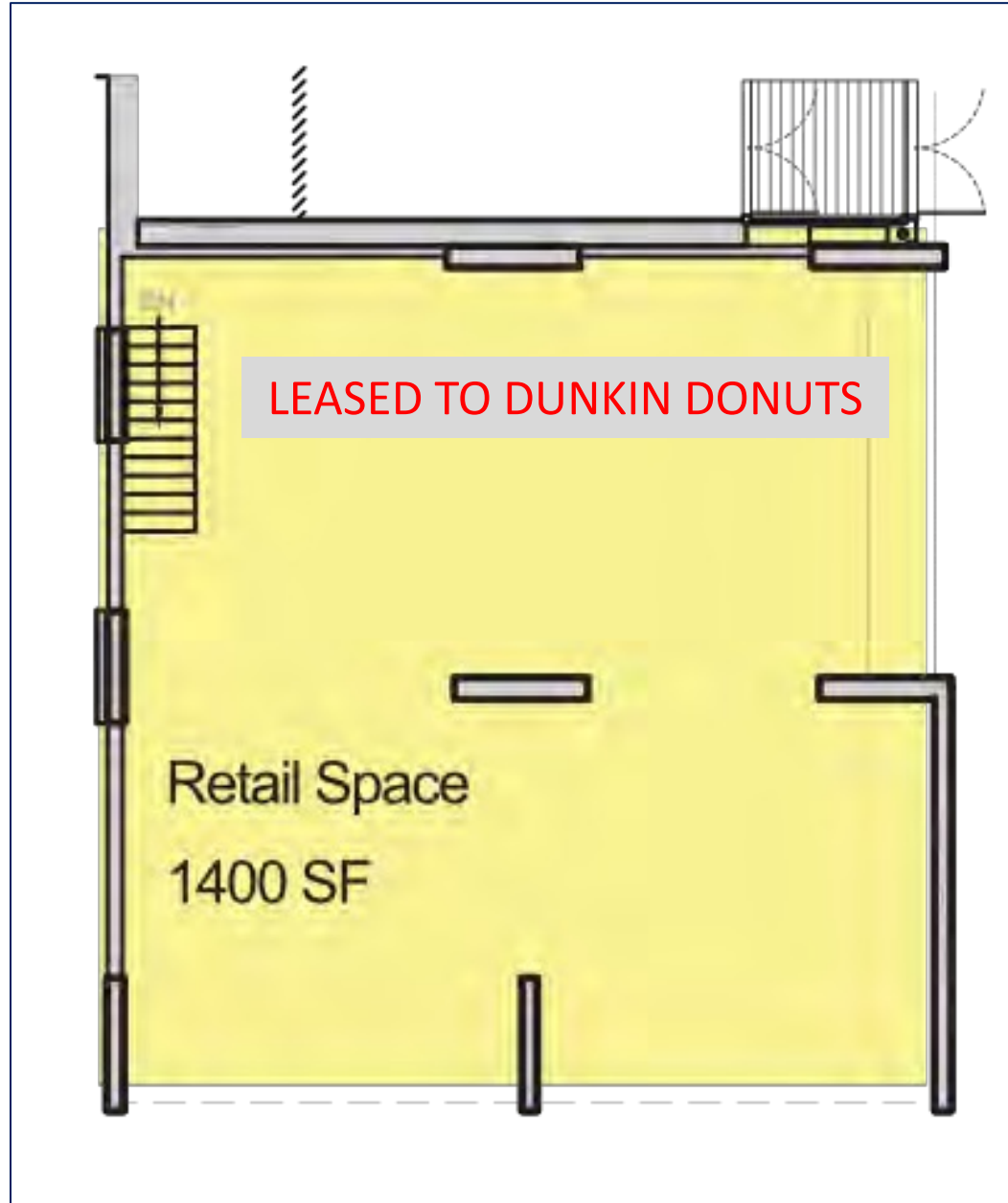
\$80.00 PSF



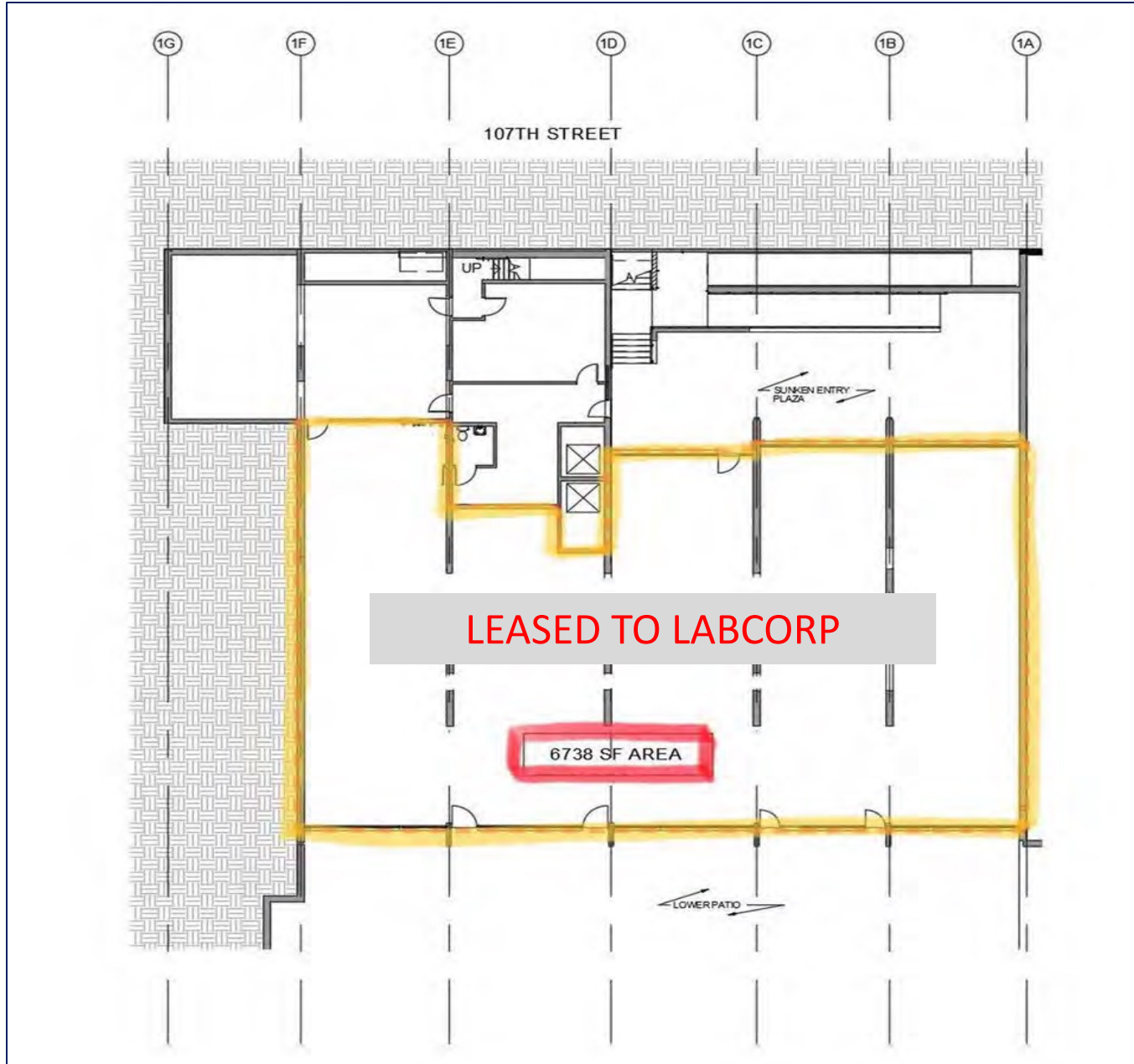


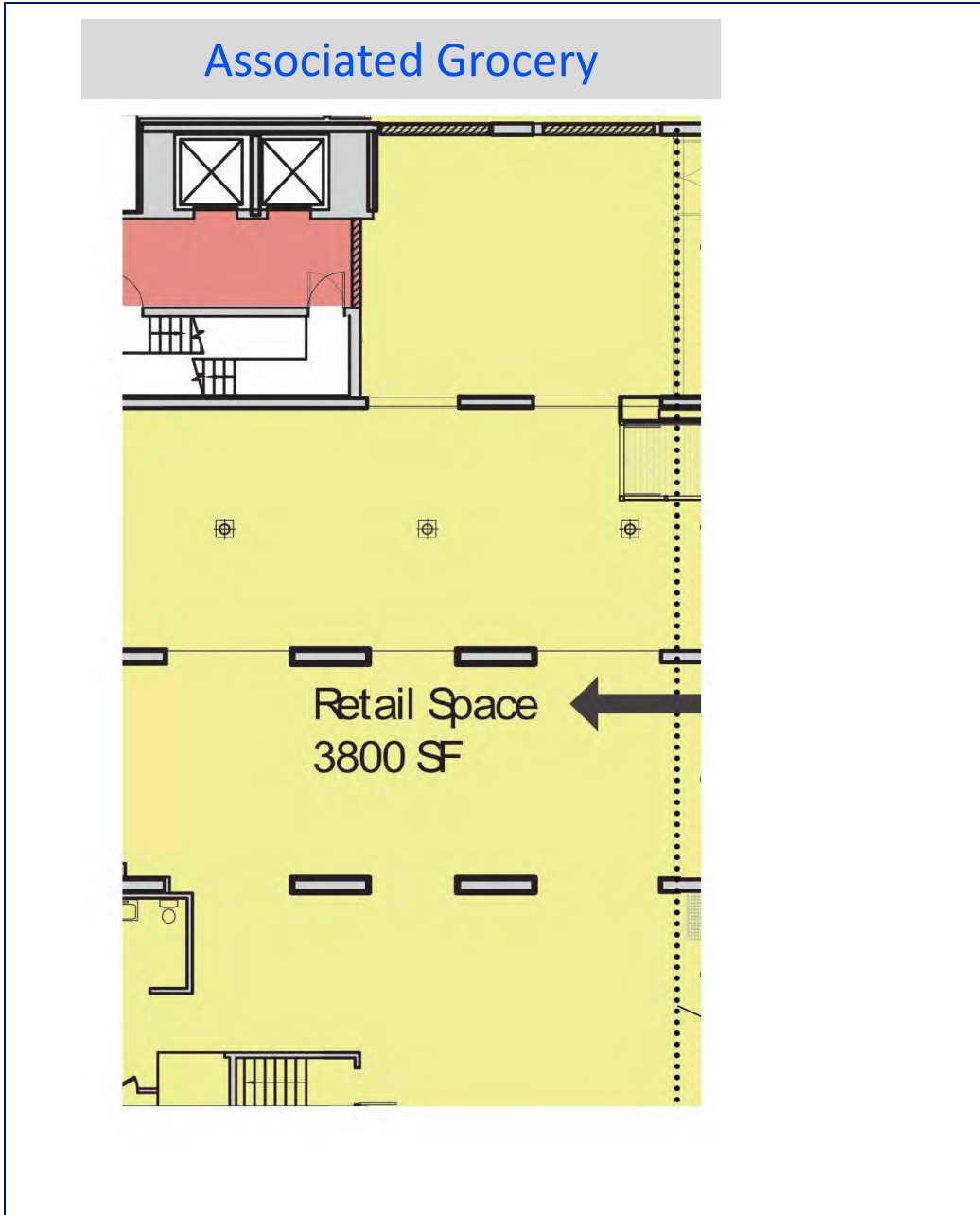
\$80.00 PSF





SPACE #5 FLOOR PLAN - LEASED

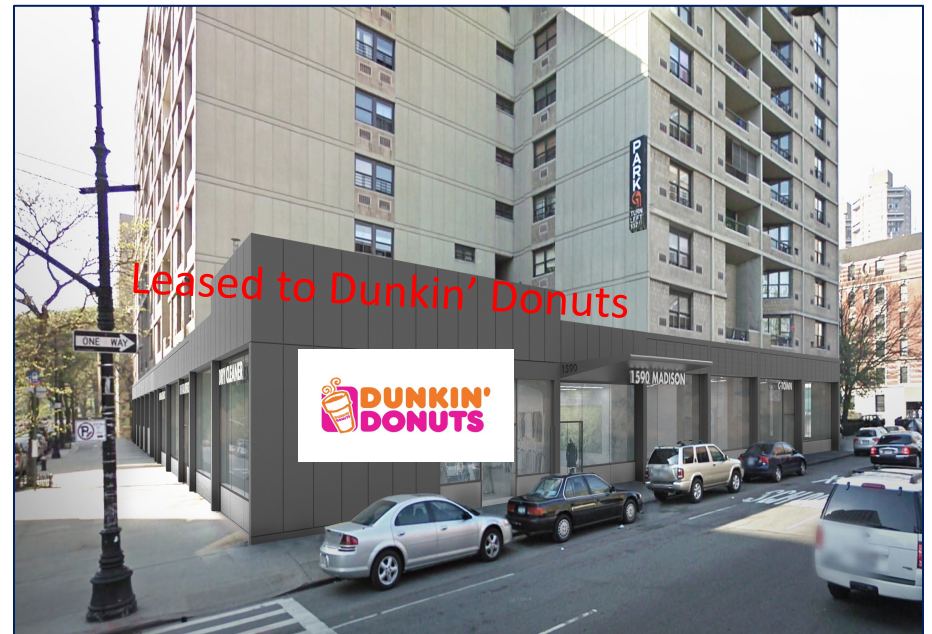




PHOTOS



PHOTOS



DEMOGRAPICS



DEMOGRAPHIC SUMMARY

1590 Madison Ave, New York, New York, 10029
 Ring of 0.5 miles

KEY FACTS

53,659

Population



20,757

Households

36.2

Median Age

\$27,883

Median Disposable Income

EDUCATION

25%

No High School Diploma



25%

High School Graduate



18%

Some College



33%

Bachelor's/Grad/Prof Degree

INCOME



\$34,727

Median Household Income



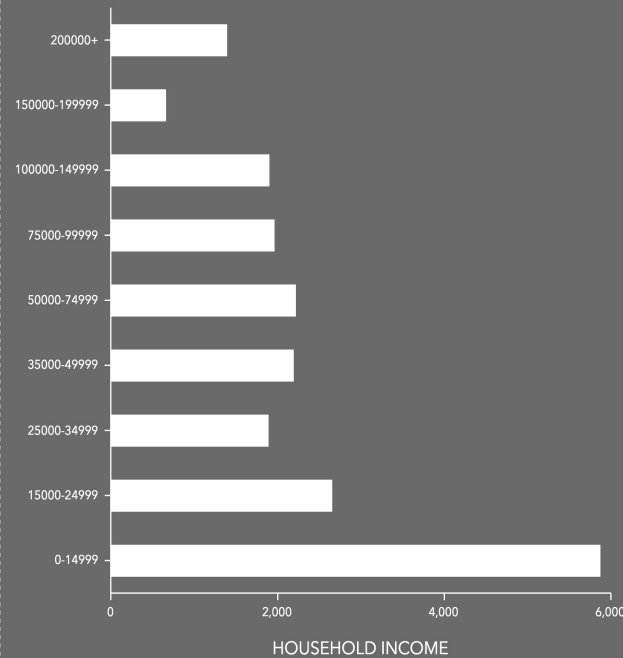
\$27,428

Per Capita Income



\$11,597

Median Net Worth



Manhattan

Jacqueline Kennedy Onassis Res'v'r



EMPLOYMENT



White Collar

71%



Blue Collar

11%



Services

18%

16.6%

Unemployment Rate

This infographic contains data provided by Esri. The vintage of the data is 2021, 2026.

DEMOGRAPHIC – MILE 1

DEMOGRAPHIC SUMMARY

1590 Madison Ave, New York, New York, 10029

Ring of 1 mile

KEY FACTS

230,305

Population



101,634

Households

37.7

Median Age

\$47,143

Median Disposable Income

EDUCATION

17%

No High School Diploma



17%

High School Graduate



15%

Some College



51%

Bachelor's/Grad/Prof Degree

INCOME



\$59,976

Median Household Income



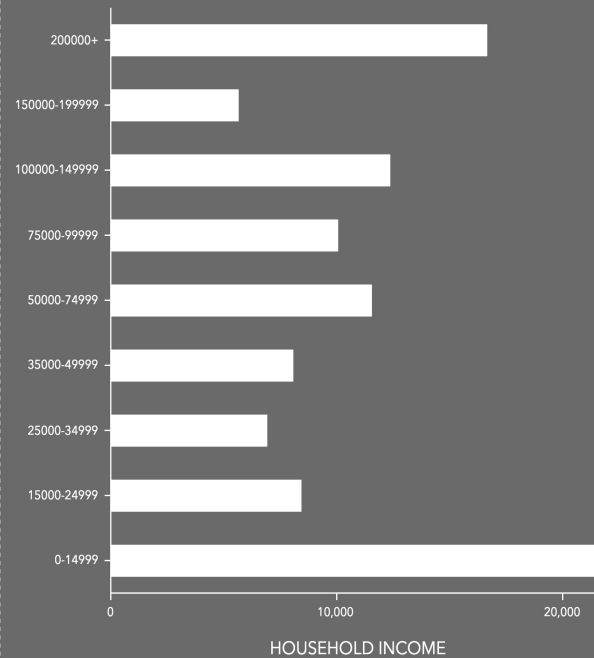
\$49,460

Per Capita Income



\$16,400

Median Net Worth



HOUSEHOLD INCOME



EMPLOYMENT

White Collar 81%

Blue Collar 8%

Services 10%

12.4%

Unemployment Rate

This infographic contains data provided by Esri. The vintage of the data is 2021, 2026.

© 2021 Esri

DEMOGRAPHIC SUMMARY

1590 Madison Ave, New York, New York, 10029

Ring of 1.5 miles

KEY FACTS

458,775

Population



210,414

Households

38.2

Median Age

\$60,546

Median Disposable Income

EDUCATION

12%

No High School Diploma



14%

High School Graduate



13%

Some College



61%

Bachelor's/Grad/Prof Degree

INCOME



\$81,159

Median Household Income



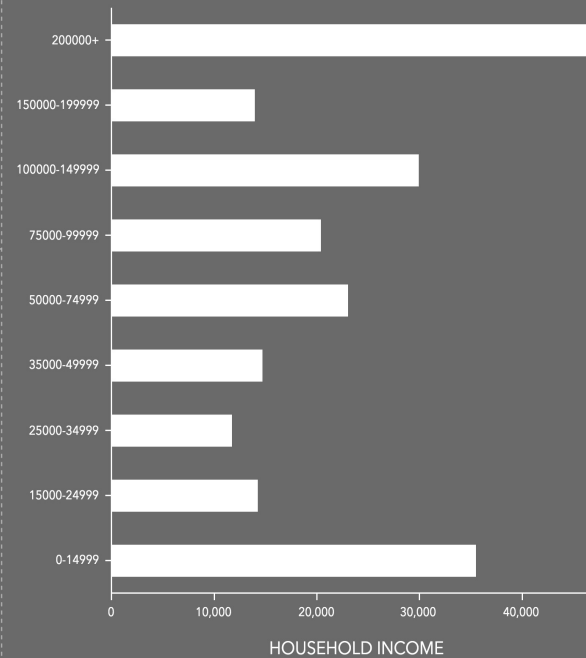
\$64,180

Per Capita Income



\$52,001

Median Net Worth



HOUSEHOLD INCOME



EMPLOYMENT

White Collar 86%

Blue Collar 6%

Services 8%

9.8%

Unemployment Rate

This infographic contains data provided by Esri. The vintage of the data is 2021, 2026.

GENDRON

COMMERCIAL BOSTON

JOHN R. GENDRON, CCIM

207-939-8500 | 212-840-9000

johnrgendron@gmail.com

www.gendroncommercial.com